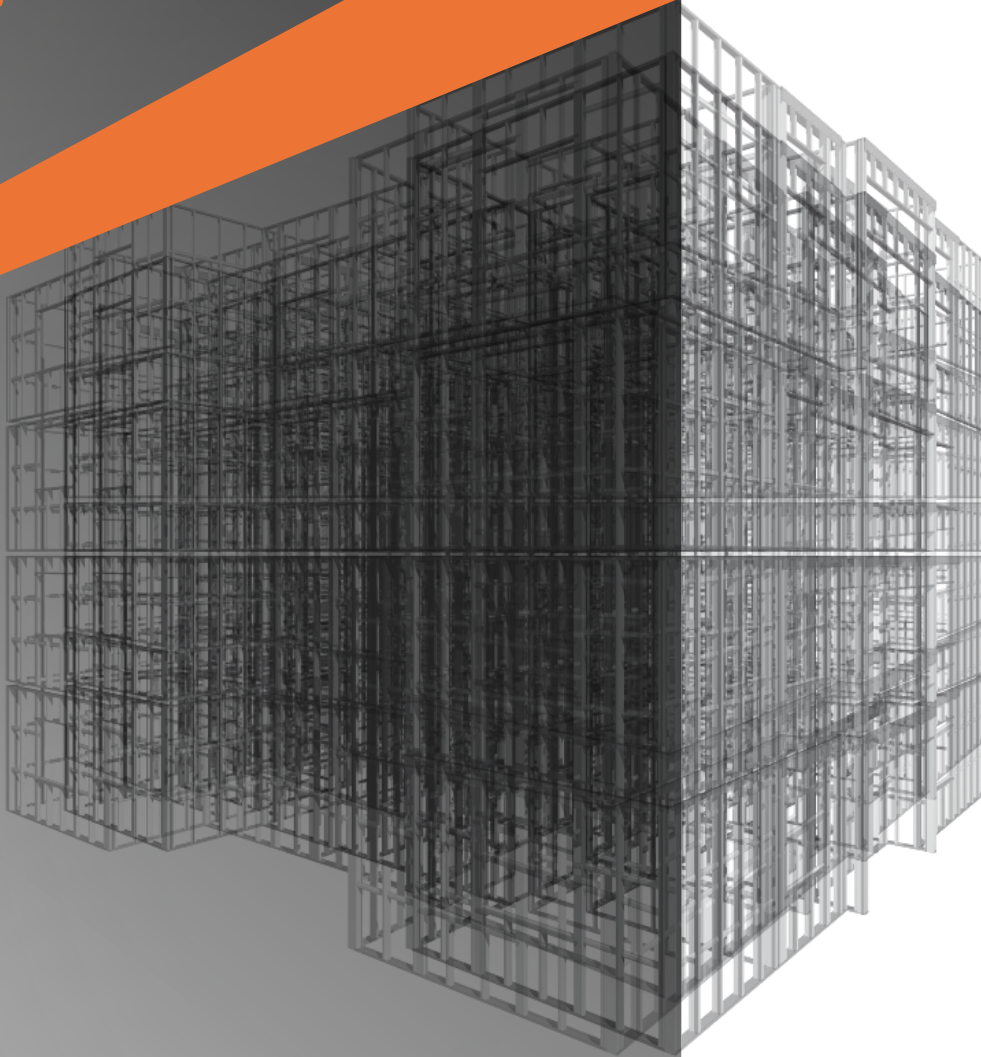


Pinnacle LGS

# Pinnacle LGS

---

WORLD Leading  
LGS / LSF Techonology  
Design & Production  
Integration



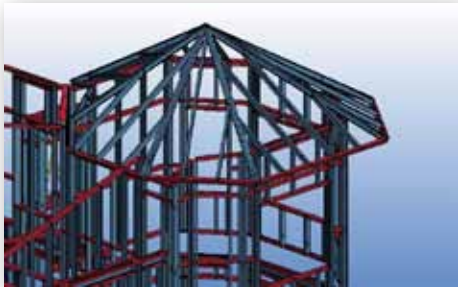
[www.pinnacleLGS.com](http://www.pinnacleLGS.com)

# PinnacleLGS

Do you want to build 300% Faster, 20% Cheaper, and 100% more Green?

Yes? Here is the solution:

PinnacleLGS Turnkey Light Steel Construction Technology!



1

**PinnacleCAD:** PinnacleCAD 3D Design & Detailing, PinnacleCAD Structure Engineering, PinnacleCAD production, all fully integrated with PinnacleFRAMER to ensure you a fully integrated design to production steel framing system!

+



2

**PinnacleFRAMER:** The world's most advanced light steel framing machinery. PinnacleFRAMERX1 System for 1 to 4 story buildings, PinnacleFRAMER X3 System for 1 to 6 story buildings, PinnacleFRAMER X5 & X6 Systems for 1 to 8 & 10 story buildings

+



3

**PinnacleENG:** PinnacleLGS' LSF structure engineers located in its offices in US, UK and Dubai represents the highest professional standards in the industry, which will ensure the success of your projects.

+



4

**Pinnacle Turnkey LGS/LSF Construction Knowhow:** Pinnacle MBS USA, Pinnacle AW Framing UK, Pinnacle Construction Middle East, total over 20+ years experience in LGS / LSF construction industry will provide you with turn key construction know how from procurement support, engineering to project execution!

=



5

**Your success with your project!** And your successful venture into a future building system for today! Which will be 300% Faster than any other available construction systems! 20% more cost effective than any other building systems in today's market! And LEED certified 100% Green Building System!

# PinnacleCAD

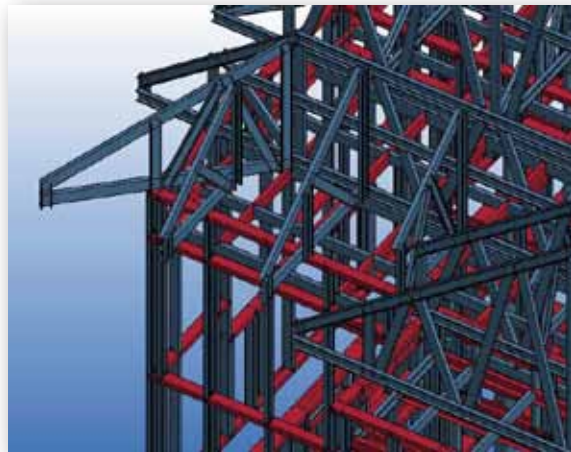


The entire layouts can be designed and analyzed easily in minutes. The Modeling program makes it even more quick and easy. PinnacleCAD enables you to efficiently generate all framing plans, drawings, materials, panel manufacturing information and cutting lists for the design, structural analysis, construction and manufacturing of residential, commercial and industrial buildings using light gauge steel framing.

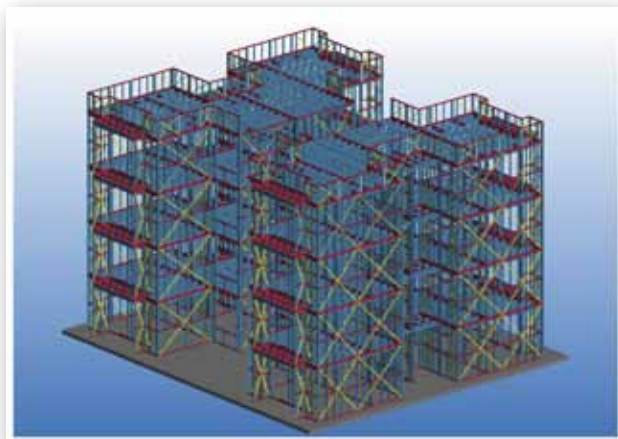


All PinnacleCAD final design files are transferred to PinnacleCAD PRODUCTION, the control system for PinnacleFRAMER, production equipment. The three fully integrated components of PinnacleCAD are PinnacleCAD Structure, PinnacleCAD Detailer and PinnacleCAD Production.

PinnacleCAD is an integrated analysis, design and detailing software program for the cold formed steel metal trusses, walls and floors of an entire building. PinnacleCAD allows the user to design, model and view, in 3D format, entire truss, wall and floor layouts for buildings.



PinnacleLGS framing system generates CAM CNC file, and manipulates CAD data into an optimized machine ready file. It formats production groups and sequences, as well as complex punching operations, such as dimpling, web notching, and screw holes for automated assembly. It also directs accurate and dynamic inkjet printing for vital parts' identification and positioning.



# PinnacleFRAMER

All Pinnacle's framing systems are custom designed, fabricated, and include all the special tooling for the complex operations dictated by the CNC files sent from our integrated PinnacleCAD design software. PinnacleFRAMERs are extremely flexible and versatile in terms of handling multiple stud and track profiles. PinnacleFRAMERs are not only capable of producing all the required framing section profiles for low rise residential buildings, but also capable of producing all the section profiles for multi-storey residential (MSR) and commercial structure requirements.

PinnacleFRAMERs are consisted of 4 levels of complexity depending on the professional requirements of our end-users: X1 series single profile system, software plus hardware, for startup level, one to four storey building construction. X3 series three profiles system, software plus hardware, for intermediate users, one to six storey building construction. And our top platinum level, X5 and X6 Platinum series, unlimited profiles auto change web size system, totally integrated system for one to eight and ten storey LGS building construction.



## X1

- Residential and Affordable Housing from 1 to 4 stories
- Labor & Staff Accommodation Facilities from 1 to 4 stories
- Truss production
- Portable Cabins and Modular Buildings
- Commercial and Industrial Construction



## X3

- Residential and Affordable Housing from 1 to 6 stories
- Labor & Staff Accommodation Facilities from 1 to 6 stories
- Truss production
- Portable Cabins and Modular Buildings
- Commercial and Industrial Construction



## X5

- Hotel and Luxury Apartment Buildings from 1 to 8 stories
- Residential and Affordable Housing, from 1 to 8 stories
- Labor & Staff Accommodation Facilities from 1 to 8 stories
- Truss production
- Portable Cabins and Modular Buildings
- Commercial and Industrial Construction



## X6

- Hotel and Luxury Apartment Buildings from 1 to 10 stories
- Residential and Affordable Housing, from 1 to 10 stories
- Labor & Staff Accommodation Facilities from 1 to 10 stories
- Truss production
- Large span floor joist production
- Commercial and Industrial Construction

## PinnacleFRAMERS Specification Comparison Chart

Model	PinnacleFRAMER X1	PinnacleFRAMER X3	PinnacleFRAMER X5	PinnacleFRAMER X6
Description	Single Web Size Profile (C+C) Framing System	Three Web Size Profile (C+C) Framing System	Multiple Profiles (C+C & C+U) Framing System (Automatic)	Multiple Profiles (C+C & C+U) Framing System (Automatic)
Design Software Integrated	PinnacleCAD (3D modeling, detailing, structural calculations)	PinnacleCAD (3D modeling, detailing, structural calculations)	PinnacleCAD (3D modeling, detailing, structural calculations)	PinnacleCAD (3D modeling, detailing, structural calculations)
Machine Control	Full NC linked with PinnacleCAD	Full NC linked with PinnacleCAD	Full NC linked with PinnacleCAD	Full NC linked with PinnacleCAD
Number of Profiles	1 x C, 1 x U	3 x C, 3 x U (Manual Adjustment-30 minutes)	Unlimited C & U between 75 - 250mm (Automatic Adjustment)	Unlimited C & U between 89 - 350mm (Automatic Adjustment)
Profile Web Sizes Capable	Dedicated Single Web Size: X1-63 (63mm) or X1-89 (89mm) or X1-75 (75mm) or X1-140 (140mm)	Three Fixed Web Size: 3 web size tools provided (63mm or 75mm, 89mm, 150mm)	Profile sizes unlimited: 5 web size tools provided (75mm, 89mm, 140mm, 200mm, 250mm) Any additional web size tools can be ordered.	Profile sizes unlimited: 6 web size tools provided (89mm, 140mm, 200mm, 250mm, 300mm, 350mm) Any additional web size tools can be ordered.
Profile Flange Size Capable	38mm for X1-63 32mm for X1-75 41mm for X1-89 & X1-140	41mm	50mm	Automatic Adjustment from 41mm to 75mm
Gauge Range	0.55mm – 1.5mm (26g-16g)	0.55mm – 1.5mm (26g-16g)	0.7mm – 2mm (24g-14g)	0.7mm – 3mm (24g-12g)
Gauge Adjustment	Semi Automatic Metric Dial	Fully Automatic Servo Powered	Semi Automatic Metric Dial	Fully Automatic Servo Powered
Roll forming Stations	Nine	Nine	Twelve	Thirteen
Frame & Truss Tooling Punches	Eleven	Eleven	Sixteen	Sixteen
Typical Production Output (model & design dependent)	Walls – 900m/hr. Joist – 300m/hr.	Walls – 900m/hr. Joist – 300m/hr.	450-900m/hr.	480-950m/hr.
Max Line Speed Plain C or U Section	Up to 2000m/hr.	Up to 2000m/hr.	Up to 3000m/hr.	Up to 3000m/hr.
Main Drive Power	7.5HP	7.5HP	15HP	20HP
Hydraulic Power	5HP	5HP	10HP	15HP
Hydraulic Oil Cooler	YES	YES	YES	YES
Hydraulic Reservoir	YES	YES	YES	YES
Hydraulic Accumulator	YES	YES	YES	YES
Length	2840mm	3640mm	9080mm	10080mm
Width	756mm	756mm	1440mm	1730mm
Height	1572mm	1572mm	1660mm	1660mm
Net Weight	2500 kg	2700 kg	9000 kg	10500 kg
Power Supply /Consumption	380 VAC / 30 KVA	380 VAC / 30 KVA	380 VAC / 50 KVA	380 VAC / 70 KVA
Printer	Inkjet Printer fully integrated	Inkjet Printer fully integrated	Inkjet Printer fully integrated	Inkjet Printer fully integrated
Controller	Windows Based PC Control	Windows Based PC Control	Windows Based PC Control	Windows Based PC Control
De-coiler Capacity	3000 kg, Powered	3000 kg, Powered	3000 kg, Powered	5000 kg, Powered

## PinnacleENG

PinnacleLGS possesses valuable LGS construction which are ready to be passed on to its global clients With its 20+ years of practical experiences in the LGS building industry from North America to Europe and from Europe to Middle East. The distinctive difference between PinnalceLGS and other competitors in the market is Pinnacle’s unique ability to provide LGS turn-key construction knowhow, rather than just LGS framing. PinnacleLGS professionals are industry leading experts delivering a pool of international experience tailored to our clients’ business requirements.

Our clients are provided with the detailed cost analysis process and access to cost models for specific market solutions. The entire LGS construction process will be covered from Structural Engineering Design, Coordination with Project Management and the clients, Shop and Installation Drawings, exporting material data, performing on site reviews, and final sign off of projects. Fire and acoustic guides, structural member sizing tools, guidelines to designing to meeting seismic, wind and snow loading, and quality assurance procedures, are only a few of many more. Our clients are provided with project management assistance from the beginning of the project to the end of the project.

Through its industry-leading green building technologies, PinnacleLGS provides its global clients with a turn-key approach to the custom design and construction of light gauge steel framed (LGS) residential and light commercial buildings, specific to the needs of each individual client in its region. This turn-key solution allows our clients instant access to PinnacleLGS design and logistics knowhow, progressive engineering and manufacturing knowhow, as well as innovative building construction knowhow. With the transfer of these knowhow, PinnacleLGS will ensure its global clients that their LGS manufacturing and construction process will be efficiently managed from the day of sale through to the completion of their project.



# Pinnacle Know-How

## Pinnacle-MBS(USA & Canada)

Mega Building Systems Ltd(MBS) is a provider of light gauge steel framing, steel joist, steel joist girders for mid-rise commercial and residential buildings. MBS has pioneered a construction method using non-combustible materials and an engineered design which provides a revolutionary, flexible and cost effective structural construction technology that improves sound separation and fire retardation. MBS is currently registered in 7 provinces of Canada, and 50 states of USA.

## Pinnacle-AW(UK & Europe)

AWFS has been erecting LGS Systems since 1995 and is now one of Europe's leading provider of "an engineering solution to a construction problem" within the Light Gauge Steel frame steel sector. Our concept here at AWFS was created by the Managing Director in 1995 with the vision of creating a less site, labour intensive means of delivering higher quality buildings. AWFS can offer single source labour or a unique offsite system, which has been developed first and foremost from a builder/developer's perspective. We believe our commitment to efficiency and effectiveness on site is what sets us apart from our competitors.



Toscana, Phoenix,  
Arizona U.S.A.

Toscana is approximately 2.5 Million square feet of light gauge framing. This project consists of twenty-seven separate buildings.



Nottinghill Gate Oakville  
Ontario, Canada

Nottinghill Gate is a six story apartment building consisting of approximately 82,000 square feet of light gauge framing.



Wedgewoods Calgary  
Alberta, Canada

WedgeWoods consists of three separate buildings of five story, totaling 700,000 square feet



Pathways at UBC  
Vancouver B.C.

Pathways at UBC is a four story Condominium of approximately 140,000 square feet

# PinnacleLGS

WORLD Leading LGS / LSF Technology, Design & Production Integration

## Contact Us:

### Dubai, UAE (Global Operation Headquarter)

Address : RA08AB01, Jebel Ali Free Zone,  
P.O. Box 262289, Dubai

Tel : +971 4 887 6338

Fax : +971 4 887 6328

E-mail : [info@pinnacleLGS.com](mailto:info@pinnacleLGS.com)

### Miami, USA (Global Headquarter)

Address : 1725 NW 97th Ave., Doral,  
Miami, FL 33172

Tel : +1 805 372 1595

Fax : +1 805 272 1595

Email : [info@pinnacleLGS.com](mailto:info@pinnacleLGS.com)

[www.pinnacleLGS.com](http://www.pinnacleLGS.com)